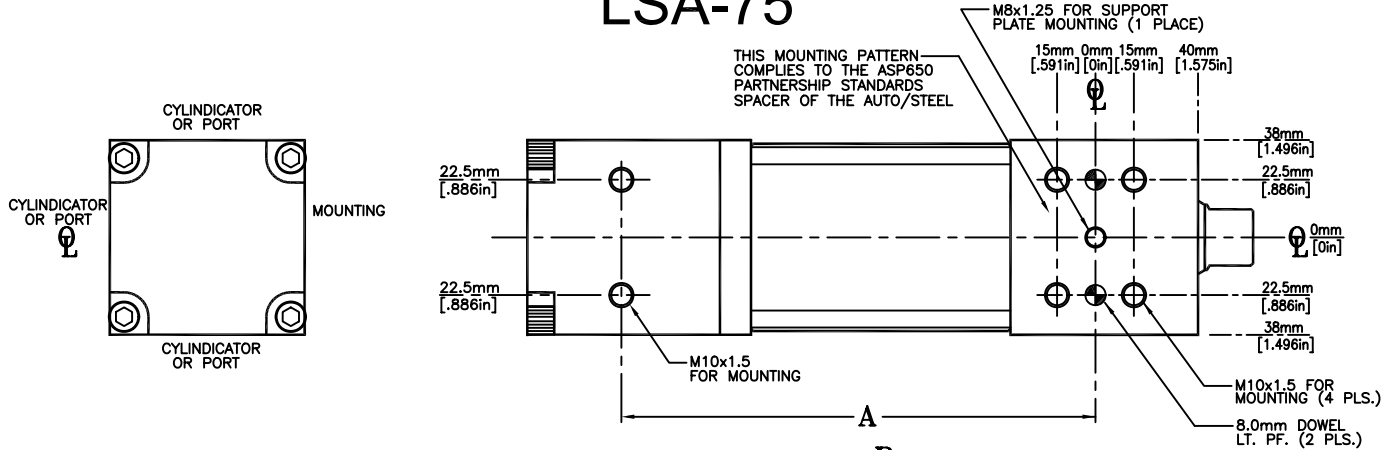
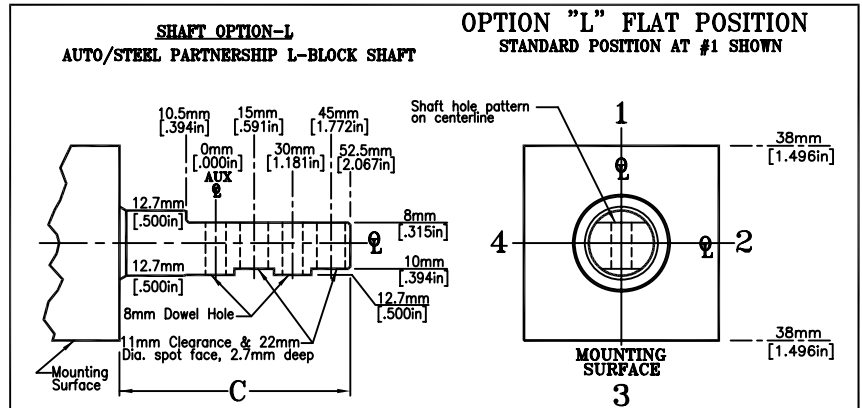
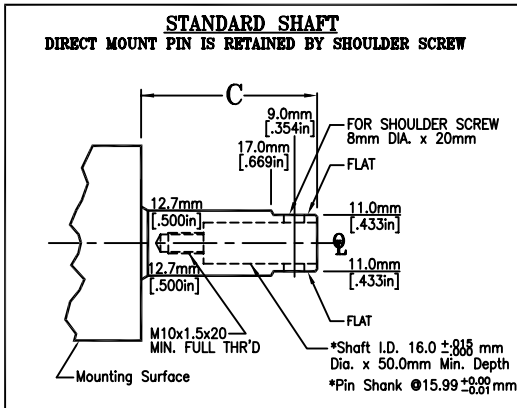
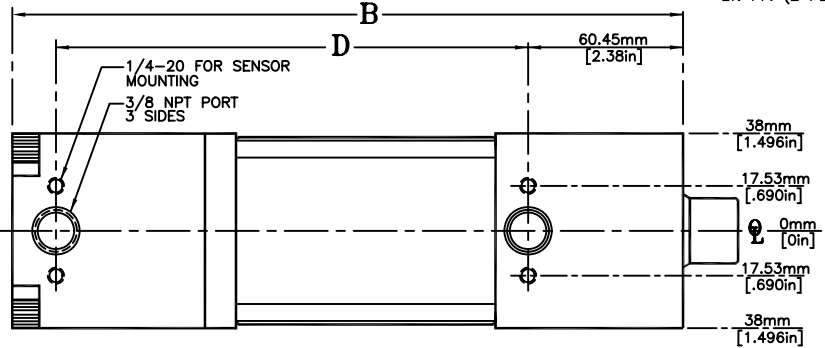


# ZAYTRAN LSA-75



|                                  |                        |
|----------------------------------|------------------------|
| Bore Diameter                    | 63.5mm (2.5in)         |
| Retract Force @689 kPa (100 PSI) | 168 kg (370 Pounds)    |
| Extend Force @689 kPa (100 PSI)  | 200 kg (440 Pounds)    |
| Maximum Pressure                 | 6895 kPa (1000 PSI)    |
| Rotary Motion                    | < 0.040°               |
| Actuation                        | Hydraulic or Pneumatic |
| Weight                           | 5 kg (11 pounds)       |



| SHAFT    | STROKE           | A               | B                  | C                 |                   | D                  | OPTION "L" ONLY FULLY EXTENDED |      |
|----------|------------------|-----------------|--------------------|-------------------|-------------------|--------------------|--------------------------------|------|
|          |                  |                 |                    | RETRACTED         | EXTENDED          |                    | MOUNTING                       | AUX. |
| STANDARD | 38.1mm (1 1/2in) | 135mm (5.315in) | 210.92mm (8.304in) | 21.89mm (.862in)  | 60mm (2.362in)    | 133.45mm (5.254in) | Ø                              | Ø    |
| STANDARD | 63.5mm (2 1/2in) | 185mm (7.283in) | 261.72 (10.304in)  | 21.49mm (.846in)  | 85mm (3.346in)    | 184.25mm (7.254in) | Ø                              | Ø    |
| OPTION L | 38.1mm (1 1/2in) | 135mm (5.315in) | 210.92mm (8.304in) | 69.40mm (2.732in) | 107.5mm (4.232in) | 133.45mm (5.254in) | 95mm (3.740)                   |      |
| OPTION L | 63.5mm (2 1/2in) | 185mm (7.283in) | 261.72 (10.304in)  | 69.00mm (2.716in) | 132.5mm (5.216)   | 184.25mm (7.254in) | 120mm (4.724)                  |      |

Cylindicator is a trademark of Namco, Inc.

**ORDERING INFORMATION** LSA - 1.5 OR 2.5 - S OR L#

Linear Straight Actuator      Stroke      Shafts

NOTE: ANTI-ROTATE/SUPPORT PLATE MUST BE UTILIZED FOR OFFSET OR EXTREME LOAD CONDITIONS.

1.5  
2.5

S = Straight Pin  
L = L-block  
# = Flat Position  
(POSITION #1 STANDARD)

**Standard Features:**

- Lubricated for life (typically 10,000,000 cycles)
- Set-up for 1.025" probe Cylindicators, 2 spacers included
- Patented spline anti-rotation - US Patent 5,974,948