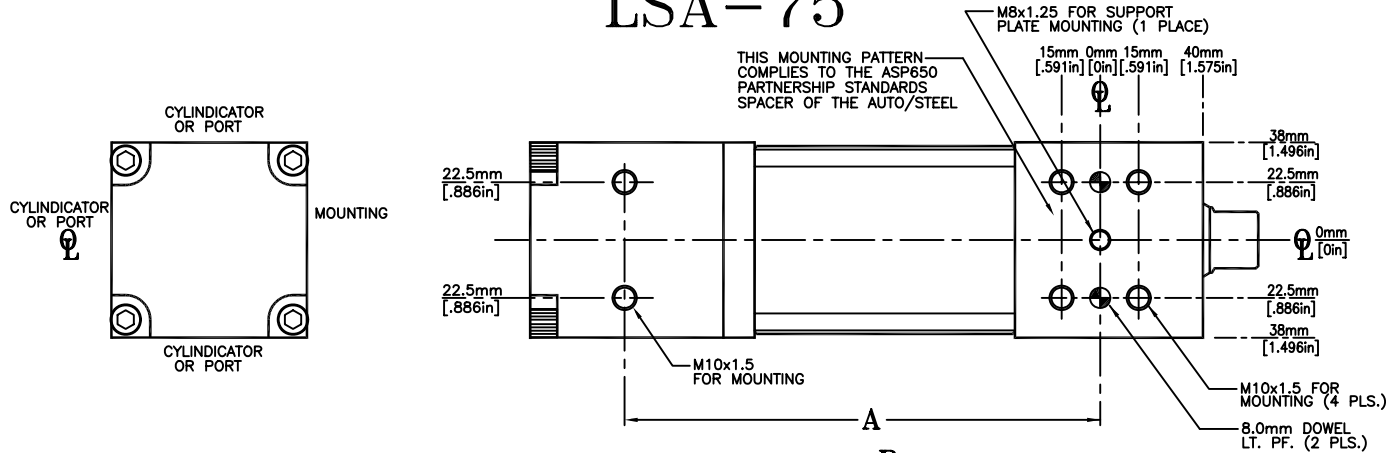
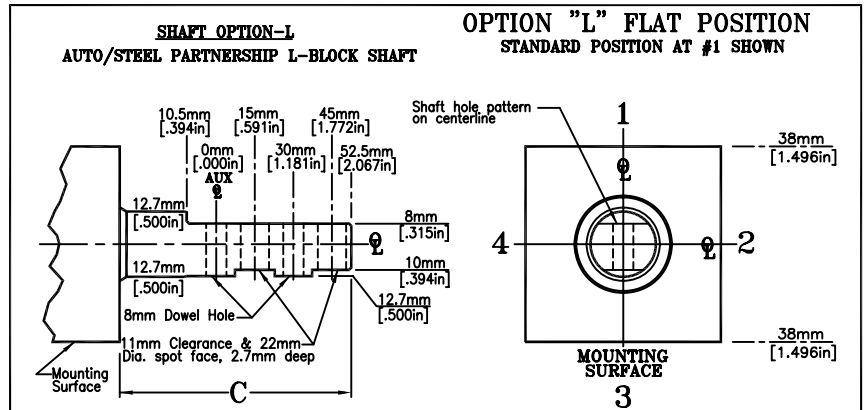
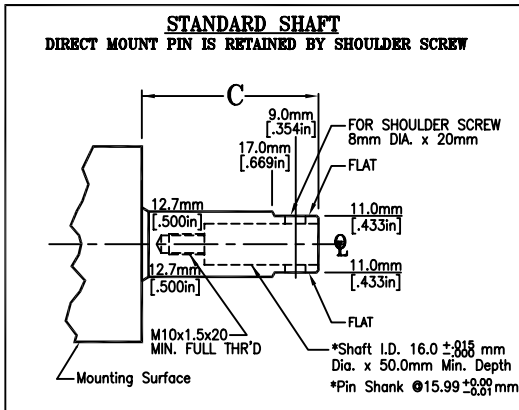


# ZAYTRAN LSA-75



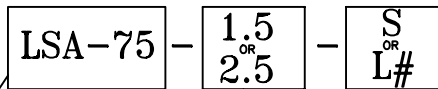
Bore Diameter	63.5mm (2.5in)
Retract Force @689 kPa (100 PSI)	168 kg (370 Pounds)
Extend Force @689 kPa (100 PSI)	200 kg (440 Pounds)
Maximum Pressure	6895 kPa (1000 PSI)
Rotary Motion	< 0.040°
Actuation	Hydraulic or Pneumatic
Weight	5 kg (11 pounds)



SHAFT	STROKE	A	B	C		D	OPTION "L" ONLY FULLY EXTENDED	
				RETRACTED	EXTENDED		MOUNTING	AUX.
STANDARD	38.1mm (1 1/2in)	135mm (5.315in)	210.92mm (8.304in)	21.89mm (.862in)	60mm (2.362in)	133.45mm (5.254in)	⌀	⌀
STANDARD	63.5mm (2 1/2in)	185mm (7.283in)	261.72 (10.304in)	21.49mm (.846in)	85mm (3.346in)	184.25mm (7.254in)	⌀	⌀
OPTION L	38.1mm (1 1/2in)	135mm (5.315in)	210.92mm (8.304in)	69.40mm (2.732in)	107.5mm (4.232in)	133.45mm (5.254in)	95mm (3.740)	
OPTION L	63.5mm (2 1/2in)	185mm (7.283in)	261.72 (10.304in)	69.00mm (2.716in)	132.5mm (5.216)	184.25mm (7.254in)	120mm (4.724)	

Cylindicator is a trademark of Namco, Inc.

## ORDERING INFORMATION



NOTE: ANTI-ROTATE/SUPPORT PLATE MUST BE UTILIZED FOR OFFSET OR EXTREME LOAD CONDITIONS.

Linear Straight Actuator

Stroke

Shafts

1.5  
2.5

S = Straight Pin

L = L-block

# = Flat Position  
(POSITION #1 STANDARD)

## Standard Features:

- Lubricated for life (typically 10,000,000 cycles)
- Set-up for 1.025" probe Cylindicators, 2 spacers included
- Patented spline anti-rotation - US Patent 5,974,948