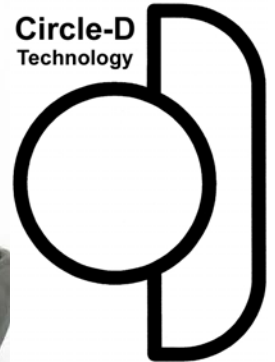


LSA-85

Linear Straight Actuator
Automotive Locating Pin



New! Bronze Anti-Weld Slag Wiper in a Non-Conductive Mount. No Insulation Option is Needed.

Rigid and Precise

The LSA-85 uses a ceramic Circle-D bearing system that provides absolute rigidity with a long circle or round bearing to combat deflection, and a “D” bearing block to counter rotation. The “D” shape has no square corners to bind and thus no “RAP” is needed. Tested with over 3,000,000 cycles and a 75mm offset 24kg load, the LSA-85 demonstrated less deflection than any commercially available locating pin and complies with every auto maker’s requirements.

Easy to Apply

The LSA-85 is symmetrical and has an extremely low profile to fit anywhere and stay out of the way of weld guns and other tooling. World standard sensors are employed to simplify controls integration. The LSA-85 uses 100% NAMMS standard mounting patterns to assure easy design and assembly on the line.

Weld Immune

The LSA-85 uses the double bronze wiper that has protected tens of thousands of LSA units in automotive factories all over the globe. This system aggressively removes any weld slag from the heat treated shaft.

Maintenance Free

The LSA-85 is guaranteed for the life of the tool (with design sign-off). There are no seals or plastic scrapers to change, no covers with pinch points, and no requirement to lubricate the unit.

Support

Supported globally by the SMC international network of companies.



ZAYTRAN LSA-85

Stroke: 25mm or 50mm
 Rap: Not Required
 Equivalent Bore Dia: 70mm
 Max. Pressure: 8.2 bar (120 psi)
 Actuation: Pneumatic
 Extend Force @ 4.1 bar (60 psi): 161.4kg (356 lbs.)
 Retract Force @ 4.1 bar (60 psi): 113.4kg (250 lbs.)
 Assembly Weight: 4kg (8.8 lbs.)

Model Nomenclature:

LSA-85-XX-YY-ZZ

XX Ports: N (NPT) or G (G-Class)

YY Stroke: 25 (25mm) or 50 (50mm)

ZZ Sensing: SEN (With Sensing) or NS (No Sensing)

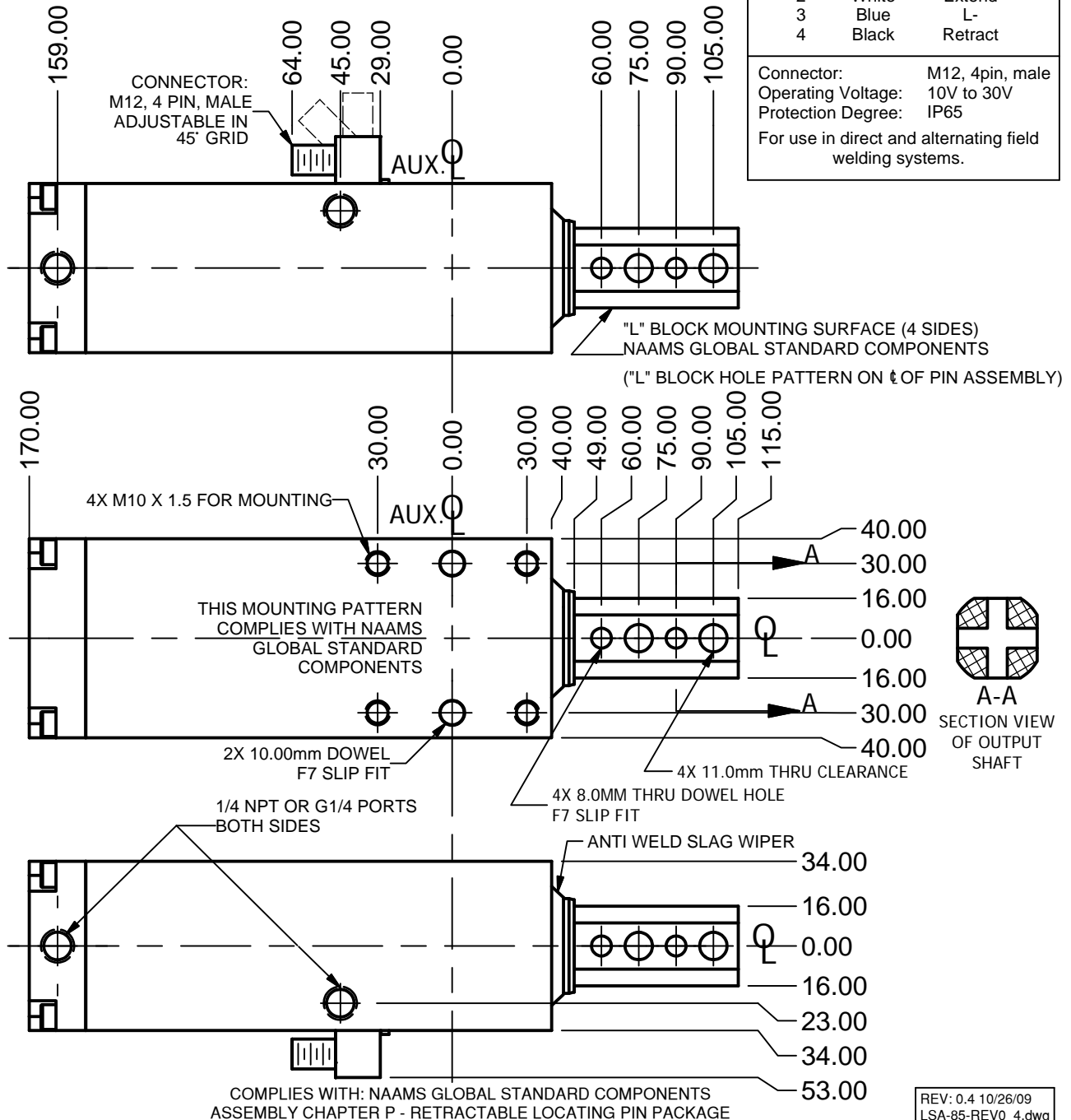
Example: LSA-85-N-50-SEN

LSA-85 with NPT Ports, 50mm of Stroke and Sensing

ZAYTRAN LSA's do not jam, therefore do not require a RAP.

Sensor Information		
Pin	Color	Function
1	Brown	L+
2	White	Extend
3	Blue	L-
4	Black	Retract

Connector: M12, 4pin, male
 Operating Voltage: 10V to 30V
 Protection Degree: IP65
 For use in direct and alternating field welding systems.



REV: 0.4 10/26/09
 LSA-85-REV0_4.dwg