

LSA-72

**Linear Straight Actuator
For Offset Locating Pins**



*The Better "2"
Multi-Pin Capable
Framing, Underbody, End of Arm*

Rigid and Precise

The LSA-72 uses a ceramic bearing system that provides absolute rigidity with a patented slider for anti-rotation. This technology combined with CNC precision results in RapStop™; a system integral to every unit. RapStop™ replaces external stops and rap couplings while it maintains Z-Axis accuracy to ± 0.050 mm. Tested with over 3,000,000 cycles and a 24kg load, the LSA-72 demonstrated less deflection than any commercially available locating pin and complies with every auto maker's requirements.

Easy to Apply

The LSA-72 is symmetrical and compact to stay out of the way of weld guns and other tooling. Dual Bronze anti-weld slag wipers in a non-conductive mount requires no insulation option. The LSA-72 uses a NAAMS standard mounting pattern on the shaft. A 40mm x 50mm mounting pattern is used to mount the body. No orifices or other restrictions should be used in the application of Zaytran LSAs.

Weld Immune

The LSA-72 uses the double bronze wiper that has protected tens of thousands of LSA units in automotive factories all over the globe. This system aggressively removes any weld slag from the heat treated shaft.

Maintenance Free

The LSA-72 is guaranteed for the life of the tool (with design sign-off). There are no seals or plastic scrapers to change, no covers with pinch points, and, like all LSAs, the unit is lubricated for life!

ZAYTRAN
AUTOMATION
www.auto-pin.com

Distributed by: **FESTO**
1-800-993-3786
www.festo.com

ZAYTRAN

LSA-72

Model Nomenclature

LSA-72-AA-BB-CC-DD-EE

AA Shaft: 0 (zero degrees) or 90 (ninety degrees)

BB Ports: N (NPT) or G (G-Class)

CC Stroke: 25 (25mm), 50 (50mm) or 75 (75mm)

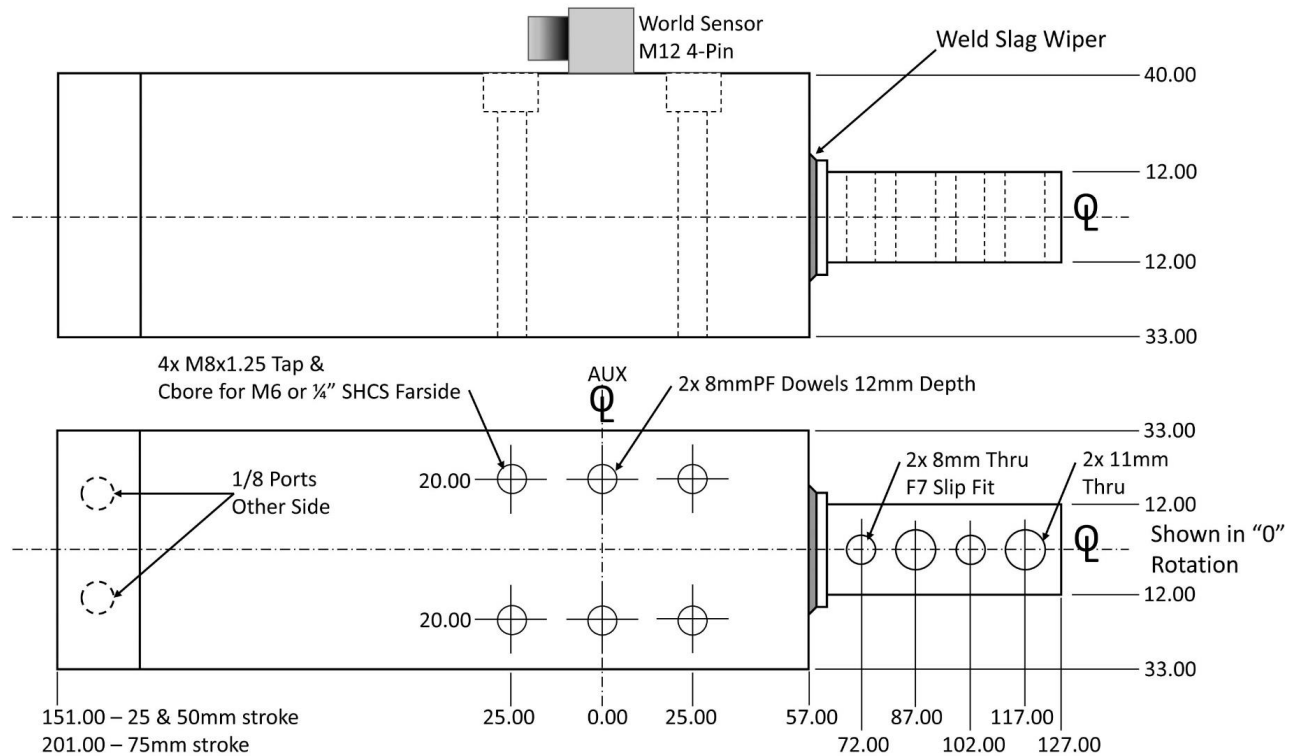
DD Sensing: SEN (P&F), SEN-TRK (Turck) or NS (No Sensing)

EE Reverse: Blank (Retract is Home) or R (Extend is Home)

Stroke: 25, 50, 75mm
 Rap: Not Required
 Equivalent Bore Dia: 61mm
 Max. Pressure: 8.2 bar (120 psi)
 Actuation: Pneumatic
 Extend Force @ 4.1 bar (60 psi): 124kg (272 lbs.)
 Retract Force @ 4.1 bar (60 psi): 90kg (198 lbs.)
 Assembly Weight: 2.8kg (6.2 lbs.)

Sensor Information			
Pin	Color	Function	-R Function
1	Brown	L+	L+
2	White	Extend	Retract
3	Blue	L-	L-
4	Black	Retract	Extend

Connector: M12, 4pin, male
 Operating Voltage: 10V to 30V
 Protection Degree: IP65
 For use in direct and alternating field welding systems.



ZAYTRAN
 AUTOMATION
 www.auto-pin.com

Distributed by: **FESTO**
 1-800-993-3786
 www.festo.com